

Scienteuch Wind Farm LVIA for RES

LUC

Figure 5.2.15: Viewpoint 15 - Cornish Hill

- Turbine
- Proposed Development Area
- 5km intervals from outer turbines
- 45km study area

Potential Turbine Visibility (Tip Height)

- 1 - 3 turbines visible
- 4 - 6 turbines visible
- 7 - 9 turbines visible

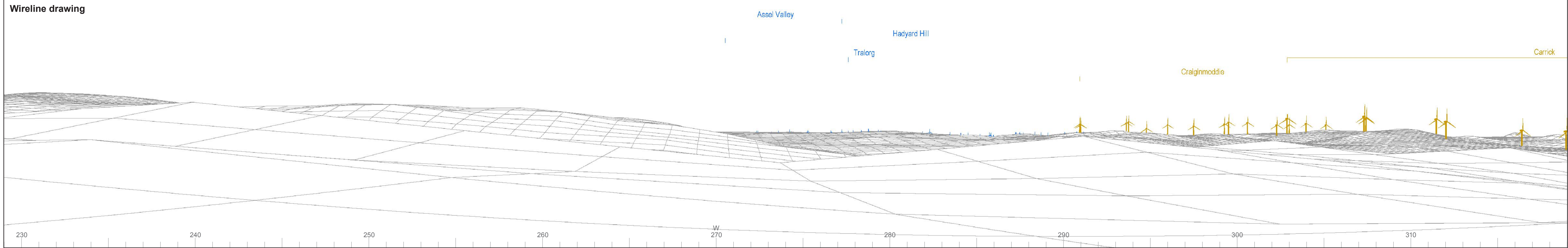
Field of View

- Viewpoint
- 53.5° Field of View
- 90° Field of View

Notes:
 The ZTV is calculated to turbine tip height (turbines T1-4, 8: 200m tip height and T5-7, 9: 180m tip height) from a viewing height of 2m above ground level.
 The terrain model assumes bare ground and is derived from OS Terrain 50 height data (obtained from Ordnance Survey in July 2019). Earth curvature and atmospheric refraction have been taken into account. The ZTV was calculated using ArcMap 10.8.1.

res

Map scale 1:25,000



OS reference: 240530E 594265N
 AOD: 454 m
 Direction of view: 274°
 Nearest turbine: 10.5 km

Horizontal field of view: 90° (cylindrical projection)
 Principal distance: 522 mm
 Paper size: 841 x 297 mm (half A1)
 Correct printed image size: 820 x 260 mm

Camera: NIKON D600
 Lens: 50mm Fixed Focal Length
 Camera height: 1.5 m

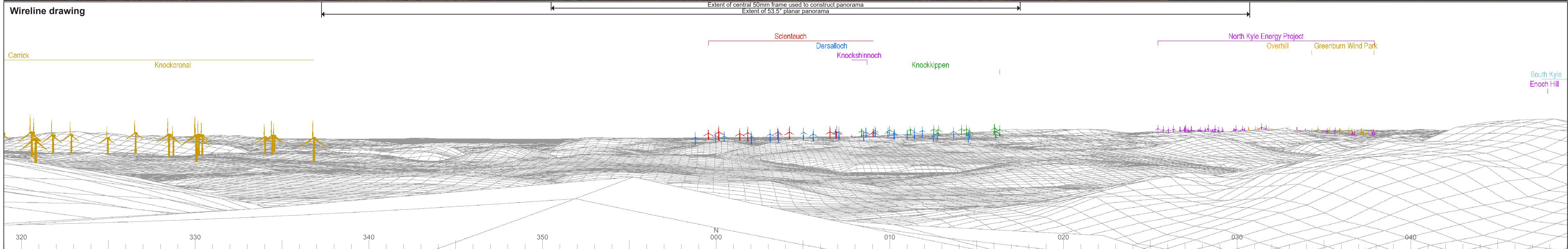
Photography Date: 07/04/2022
 Photography Time: 13:59:00

Wind Farm Developments key
 (by status):

Proposed scheme
 Operational
 Under construction
 Consented

Application
 Scoping
 Appeal/PLI

© Crown copyright and database rights 2022 Ordnance Survey data. Licence number: 0100051673



OS reference: 240530E 594265N
 AOD: 454 m
 Direction of view: 4°
 Nearest turbine: 10.5 km

Horizontal field of view: 90° (cylindrical projection)
 Principal distance: 522 mm
 Paper size: 841 x 297 mm (half A1)
 Correct printed image size: 820 x 260 mm

Camera: NIKON D600
 Lens: 50mm Fixed Focal Length
 Camera height: 1.5 m

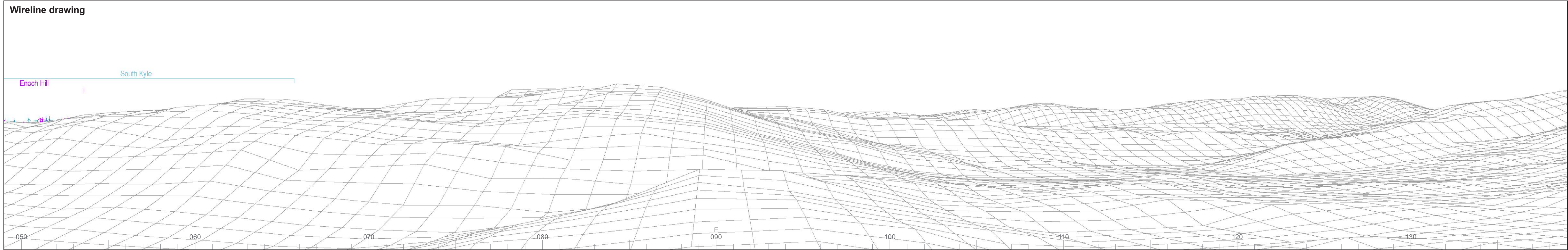
Photography Date: 07/04/2022
 Photography Time: 13:59:00

Wind Farm Developments key (by status):

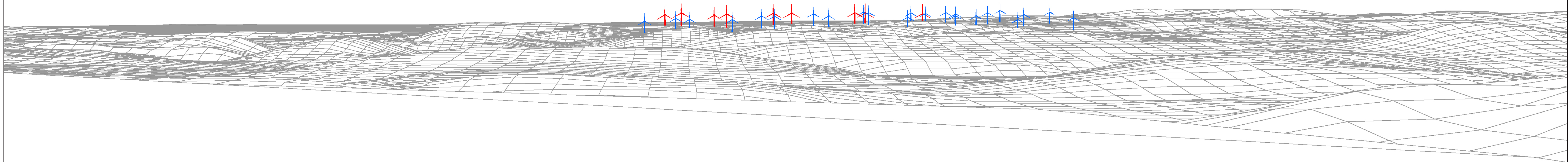
Proposed scheme
 Operational
 Under construction
 Consented

Application Scoping
 Appeal/PLI

© Crown copyright and database rights 2022 Ordnance Survey data. Licence number: 0100051673



2 1 5 3 6 4 7 8 9



Wireline drawing

View flat at a comfortable arm's length



OS reference: 240530E 594265N
AOD: 454 m
Direction of view: 4°
Nearest turbine: 10.5 km

Horizontal field of view: 53.5° (planar projection)
Principal distance: 812.5 mm
Paper size: 841 x 297 mm (half A1)
Correct printed image size: 820 x 260 mm

Wind Farm Developments key
(by status):

Proposed scheme
Operational

Scienteuch Wind Farm
Figure: 5.2.15d
Viewpoint 15: Cornish Hill



Photomontage

View flat at a comfortable arm's length



OS reference: 240530E 594265N
AOD: 454 m
Direction of view: 4°
Nearest turbine: 10.5 km

Horizontal field of view: 53.5° (planar projection)
Principal distance: 812.5 mm
Paper size: 841 x 297 mm (half A1)
Correct printed image size: 820 x 260 mm

Camera: NIKON D600
Lens: 50mm Fixed Focal Length
Camera height: 1.5 m

Photography Date: 07/04/2022
Photography Time: 13:59:00

Scienteuch Wind Farm
Figure: 5.2.15e
Viewpoint 15: Cornish Hill



Photomontage: Minimum Intensity Aviation Hub lighting shown at 200 candelas

View flat at a comfortable arm's length



OS reference: 240530E 594265N
AOD: 454 m
Direction of view: 4°
Nearest turbine: 10.5 km

Horizontal field of view: 53.5° (planar projection)
Principal distance: 812.5 mm
Paper size: 841 x 297 mm (half A1)
Correct printed image size: 820 x 260 mm

Camera: NIKON D600
Lens: 50mm Fixed Focal Length
Camera height: 1.5 m

Photography Date: 07/04/2022
Photography Time: 19:36:00



Photomontage: Maximum Intensity Aviation Hub lighting shown at 2000 candelas

View flat at a comfortable arm's length



OS reference: 240530E 594265N
AOD: 454 m
Direction of view: 4°
Nearest turbine: 10.5 km

Horizontal field of view: 53.5° (planar projection)
Principal distance: 812.5 mm
Paper size: 841 x 297 mm (half A1)
Correct printed image size: 820 x 260 mm

Camera: NIKON D600
Lens: 50mm Fixed Focal Length
Camera height: 1.5 m

Photography Date: 07/04/2022
Photography Time: 19:36:00