

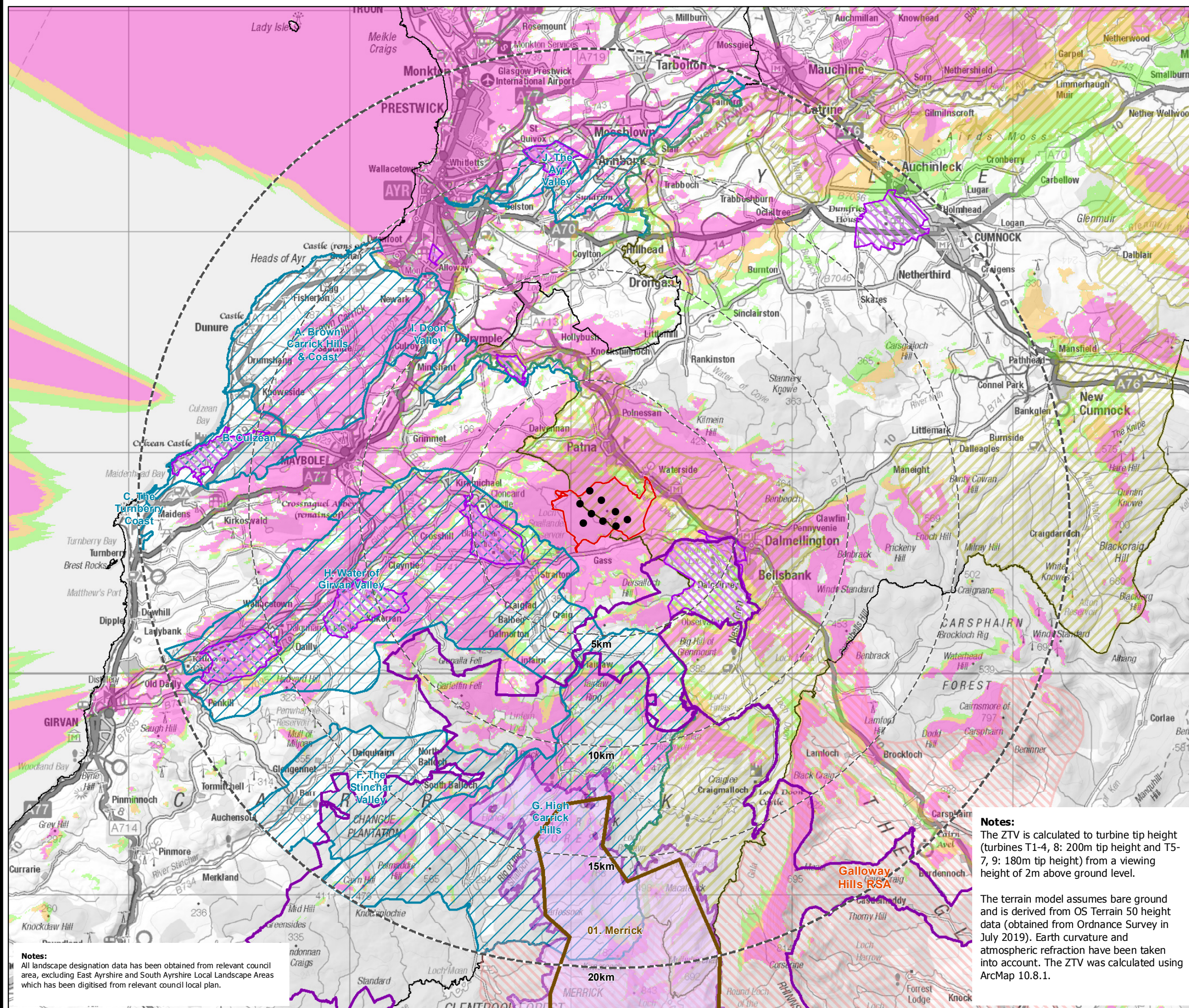


SCLENTEUCH WIND FARM

FIGURE 5.1.7

DESIGNATED AND PROTECTED LANDSCAPES WITH BLADE TIP HEIGHT (180M AND 200M) ZONE OF THEORETICAL VISIBILITY (ZTV)

CONTAINS ORDNANCE SURVEY DATA © CROWN COPYRIGHT AND DATABASE RIGHT 2022



- Turbine
- ▭ Proposed Development Area
- 5km intervals from outer turbines
- 20km study area
- ▭ Local Authority boundary
- Potential Turbine Visibility (Tip Height)**
- 1 - 3 turbines visible
- 4 - 6 turbines visible
- 7 - 9 turbines visible
- Designated and Protected Landscapes**
- Garden and Designed Landscape (GDL)
- Galloway Forest Dark Skies Park
- Galloway Forest Dark Skies Park Core Area
- Wild Land Area (2014 NatureScot)
- Special Landscape Area (East Ayrshire)
- South Ayrshire Local Landscape Areas
- Regional Scenic Area (Dumfries and Galloway)

Notes:
 The ZTV is calculated to turbine tip height (turbines T1-4, 8: 200m tip height and T5-7, 9: 180m tip height) from a viewing height of 2m above ground level.

The terrain model assumes bare ground and is derived from OS Terrain 50 height data (obtained from Ordnance Survey in July 2019). Earth curvature and atmospheric refraction have been taken into account. The ZTV was calculated using ArcMap 10.8.1.

Notes:
 All landscape designation data has been obtained from relevant council area, excluding East Ayrshire and South Ayrshire Local Landscape Areas which has been digitised from relevant council local plan.

LUC

Data source: RES, NatureScot, NSA Scottish Government
 Spatial Data, Historic Scotland

LAYOUT DWG 03896-RES-LAY-DR-TE-001	LAYOUT NO. PSC0sc1026
DRAWING NUMBER FIG51_07_11507_RES_LV1A_ZTV_TIP_Designations_20km_A3L	

SCALE - 1:170,000 @ A3

ENVIRONMENTAL STATEMENT & PLANNING APPLICATION 2022

THIS DRAWING IS THE PROPERTY OF RENEWABLE ENERGY SYSTEMS LTD. AND NO REPRODUCTION MAY BE MADE IN WHOLE OR IN PART WITHOUT PERMISSION