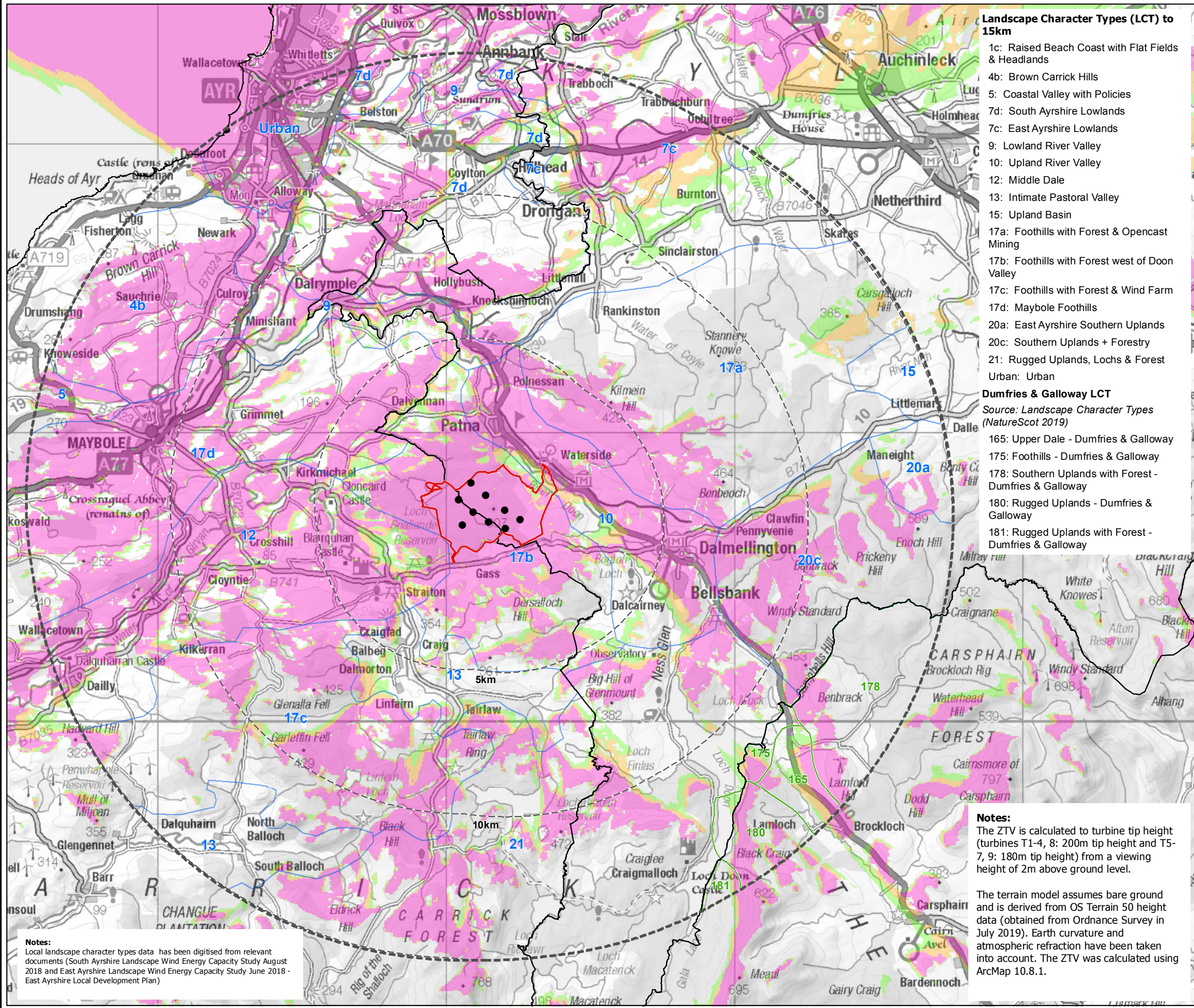




SCLENTEUCH WIND FARM

FIGURE 5.1.5 LANDSCAPE CHARACTER TYPES WITH BLADE TIP HEIGHT (180M AND 200M) ZONE OF THEORETICAL VISIBILITY (ZTV)

CONTAINS ORDNANCE SURVEY DATA © CROWN COPYRIGHT AND DATABASE RIGHT 2022



Landscape Character Types (LCT) to 15km

- 1c: Raised Beach Coast with Flat Fields & Headlands
- 4b: Brown Carrick Hills
- 5: Coastal Valley with Policies
- 7d: South Ayrshire Lowlands
- 7c: East Ayrshire Lowlands
- 9: Lowland River Valley
- 10: Upland River Valley
- 12: Middle Dale
- 13: Intimate Pastoral Valley
- 15: Upland Basin
- 17a: Foothills with Forest & Opencast Mining
- 17b: Foothills with Forest west of Doon Valley
- 17c: Foothills with Forest & Wind Farm
- 17d: Maybole Foothills
- 20a: East Ayrshire Southern Uplands
- 20c: Southern Uplands + Forestry
- 21: Rugged Uplands, Lochs & Forest
- Urban: Urban

Dumfries & Galloway LCT

Source: Landscape Character Types (NatureScot 2019)

- 165: Upper Dale - Dumfries & Galloway
- 175: Foothills - Dumfries & Galloway
- 178: Southern Uplands with Forest - Dumfries & Galloway
- 180: Rugged Uplands - Dumfries & Galloway
- 181: Rugged Uplands with Forest - Dumfries & Galloway

- Turbine
 - ▭ Proposed Development Area
 - 5km intervals from outer turbines
 - 15km from outer turbines
 - ▭ Local Authority boundary
- Potential Turbine Visibility (Tip Height)**
- 1 - 3 turbines visible
 - 4 - 6 turbines visible
 - 7 - 9 turbines visible

Landscape Character Types (LCT) to 15km

- ▭ Dumfries & Galloway LCT (2019)
- ▭ South Ayrshire / East Ayrshire LCT 2018

Notes:
The ZTV is calculated to turbine tip height (turbines T1-4, 8: 200m tip height and T5-7, 9: 180m tip height) from a viewing height of 2m above ground level.

The terrain model assumes bare ground and is derived from OS Terrain 50 height data (obtained from Ordnance Survey in July 2019). Earth curvature and atmospheric refraction have been taken into account. The ZTV was calculated using ArcMap 10.8.1.

Notes:
Local landscape character types data has been digitised from relevant documents (South Ayrshire Landscape Wind Energy Capacity Study August 2018 and East Ayrshire Landscape Wind Energy Capacity Study June 2018 - East Ayrshire Local Development Plan)



Layout DWG: 03896-RES-LAY-DR-TE-001 | Layout No: PSC0sc1026

Drawing Number: FIG51_05_11507_RES_ZTV_TIP_LVIA_Local LCT_15km_A3L

SCALE - 1:130,000 @ A3

ENVIRONMENTAL STATEMENT & PLANNING APPLICATION 2022

THIS DRAWING IS THE PROPERTY OF RENEWABLE ENERGY SYSTEMS LTD. AND NO REPRODUCTION MAY BE MADE IN WHOLE OR IN PART WITHOUT PERMISSION