

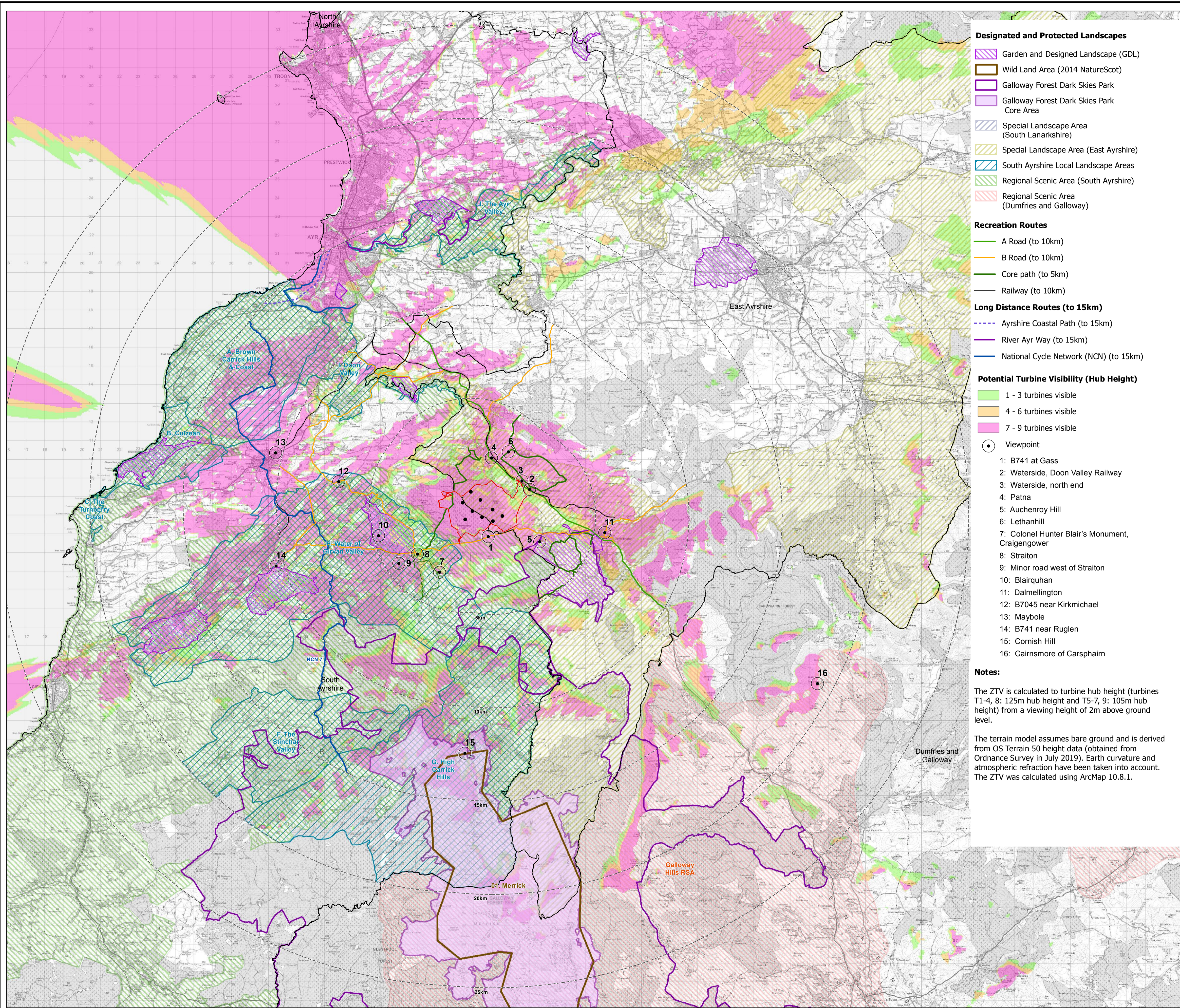


SCLENTEUCH WIND FARM

FIGURE 5.1.3c HUB HEIGHT (105M AND 125M) ZONE OF THEORETICAL VISIBILITY (ZTV) AND VIEWPOINT LOCATIONS

© CROWN COPYRIGHT AND DATABASE RIGHT 2022 Ordnance Survey 0100031673

- Turbine
- ▭ Proposed Development Area
- 5km intervals from outer turbines
- ▭ Local Authority boundary



- Designated and Protected Landscapes**
- ▨ Garden and Designed Landscape (GDL)
 - ▭ Wild Land Area (2014 NatureScot)
 - ▭ Galloway Forest Dark Skies Park
 - ▭ Galloway Forest Dark Skies Park Core Area
 - ▨ Special Landscape Area (South Lanarkshire)
 - ▨ Special Landscape Area (East Ayrshire)
 - ▨ South Ayrshire Local Landscape Areas
 - ▨ Regional Scenic Area (South Ayrshire)
 - ▨ Regional Scenic Area (Dumfries and Galloway)
- Recreation Routes**
- A Road (to 10km)
 - B Road (to 10km)
 - Core path (to 5km)
 - Railway (to 10km)
- Long Distance Routes (to 15km)**
- Ayrshire Coastal Path (to 15km)
 - River Ayr Way (to 15km)
 - National Cycle Network (NCN) (to 15km)

- Potential Turbine Visibility (Hub Height)**
- ▨ 1 - 3 turbines visible
 - ▨ 4 - 6 turbines visible
 - ▨ 7 - 9 turbines visible
- Viewpoint
- 1: B741 at Gass
 - 2: Waterside, Doon Valley Railway
 - 3: Waterside, north end
 - 4: Patna
 - 5: Aucheny Hill
 - 6: Lethanhill
 - 7: Colonel Hunter Blair's Monument, Craiggower
 - 8: Straiton
 - 9: Minor road west of Straiton
 - 10: Blairquhan
 - 11: Dalmellington
 - 12: B7045 near Kirkmichael
 - 13: Maybole
 - 14: B741 near Ruglen
 - 15: Cornish Hill
 - 16: Cairnmore of Carsphairn

Notes:

The ZTV is calculated to turbine hub height (turbines T1-4, 8: 125m hub height and T5-7, 9: 105m hub height) from a viewing height of 2m above ground level.

The terrain model assumes bare ground and is derived from OS Terrain 50 height data (obtained from Ordnance Survey in July 2019). Earth curvature and atmospheric refraction have been taken into account. The ZTV was calculated using ArcMap 10.8.1.



Data source: RES, LUC, NatureScot, SUSTRANS, LDWA

LAYOUT DWG: 03896-RES-LAY-DR-TE-001 T-LAYOUT NO.: PSC0scI026

DRAWING NUMBER: FIG51_03c_11507_RES_LVIA_ZTV_OST50_HUB_105m_125m_PSC0scI026_VP_25km_A11

SCALE - 1:100,000 @ A1

ENVIRONMENTAL STATEMENT & PLANNING APPLICATION 2022

THIS DRAWING IS THE PROPERTY OF RENEWABLE ENERGY SYSTEMS LTD. AND NO REPRODUCTION MAY BE MADE IN WHOLE OR IN PART WITHOUT PERMISSION