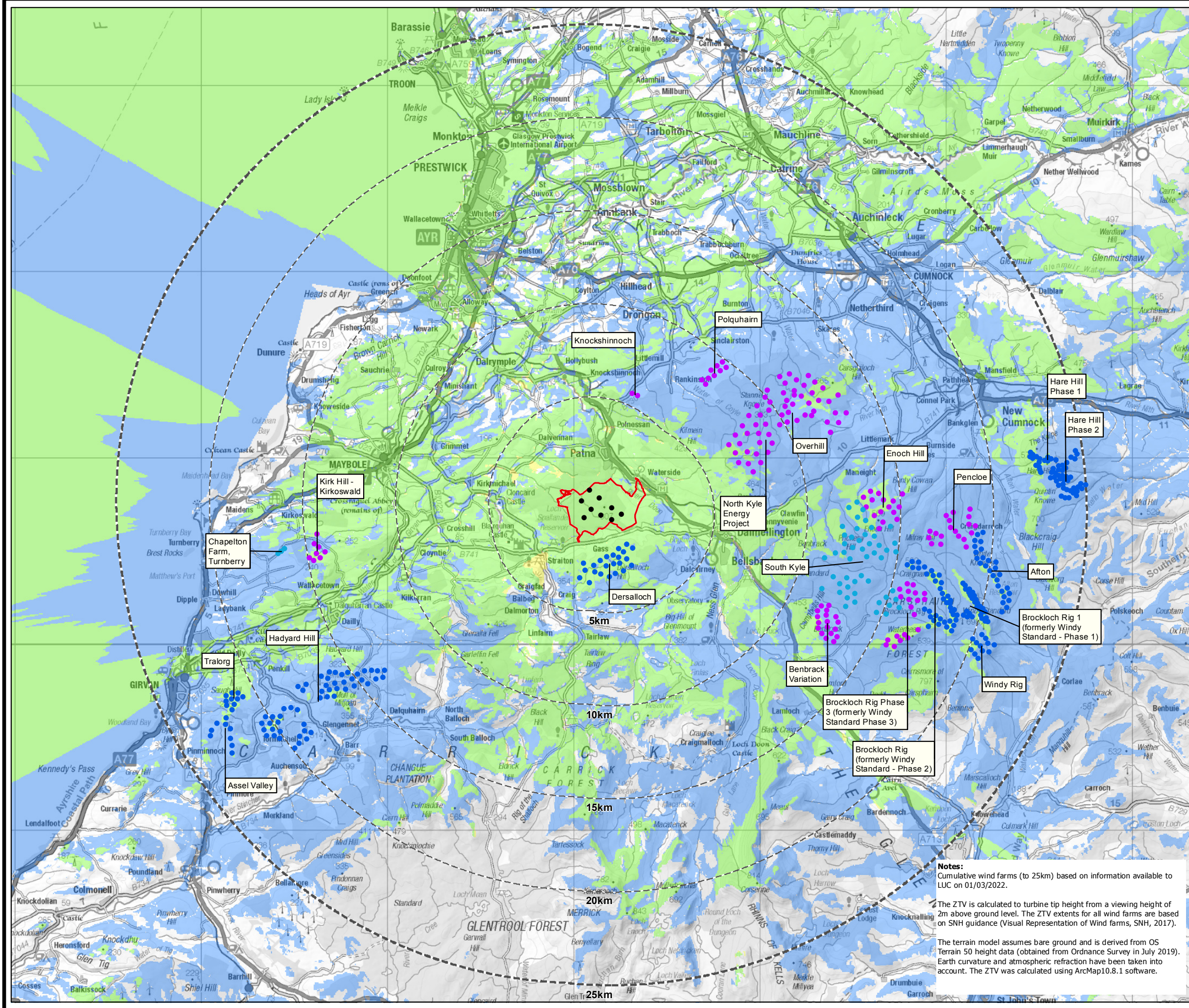




SCLENTEUCH WIND FARM

FIGURE 5.1.9b CUMULATIVE ZONE OF THEORETICAL VISIBILITY - OPERATIONAL AND CONSENTED WIND FARMS AND SCLENTEUCH (25 KM)

CONTAINS ORDNANCE SURVEY DATA © CROWN COPYRIGHT AND DATABASE RIGHT 2022



- Turbine
 - ▭ Proposed Development Area
 - ⋯ 5km intervals from outer turbines
 - ⋯ 25km study area
- Wind farm developments (by status)**
- Operational
 - Under Construction
 - Consented
- Cumulative ZTV**
- Only operational, under construction and consented wind farms visible
 - Only Scienteuch Wind Farm visible
 - Scienteuch, operational, under construction and consented wind farms visible

Notes:
Polquhain has consent for a scheme of nine turbines with 100m blade tip height.
Overhill has consent for a scheme of ten turbines with 149.9 m blade tip height.



Data source: RES
LAYOUT DWG: 03896-RES-LAY-DR-TE-001 LAYOUT NO.: PSC0sc1026
DRAWING NUMBER: FIG51_09b_11507_RES_LVIA_CZTV_Opp_Consented_25km_A3L

SCALE - 1:200,000 @ A3

ENVIRONMENTAL STATEMENT & PLANNING APPLICATION 2022

THIS DRAWING IS THE PROPERTY OF RENEWABLE ENERGY SYSTEMS LTD. AND NO REPRODUCTION MAY BE MADE IN WHOLE OR IN PART WITHOUT PERMISSION

Notes:
Cumulative wind farms (to 25km) based on information available to LUC on 01/03/2022.
The ZTV is calculated to turbine tip height from a viewing height of 2m above ground level. The ZTV extents for all wind farms are based on SNH guidance (Visual Representation of Wind farms, SNH, 2017).
The terrain model assumes bare ground and is derived from OS Terrain 50 height data (obtained from Ordnance Survey in July 2019). Earth curvature and atmospheric refraction has been taken into account. The ZTV was calculated using ArcMap10.8.1 software.