

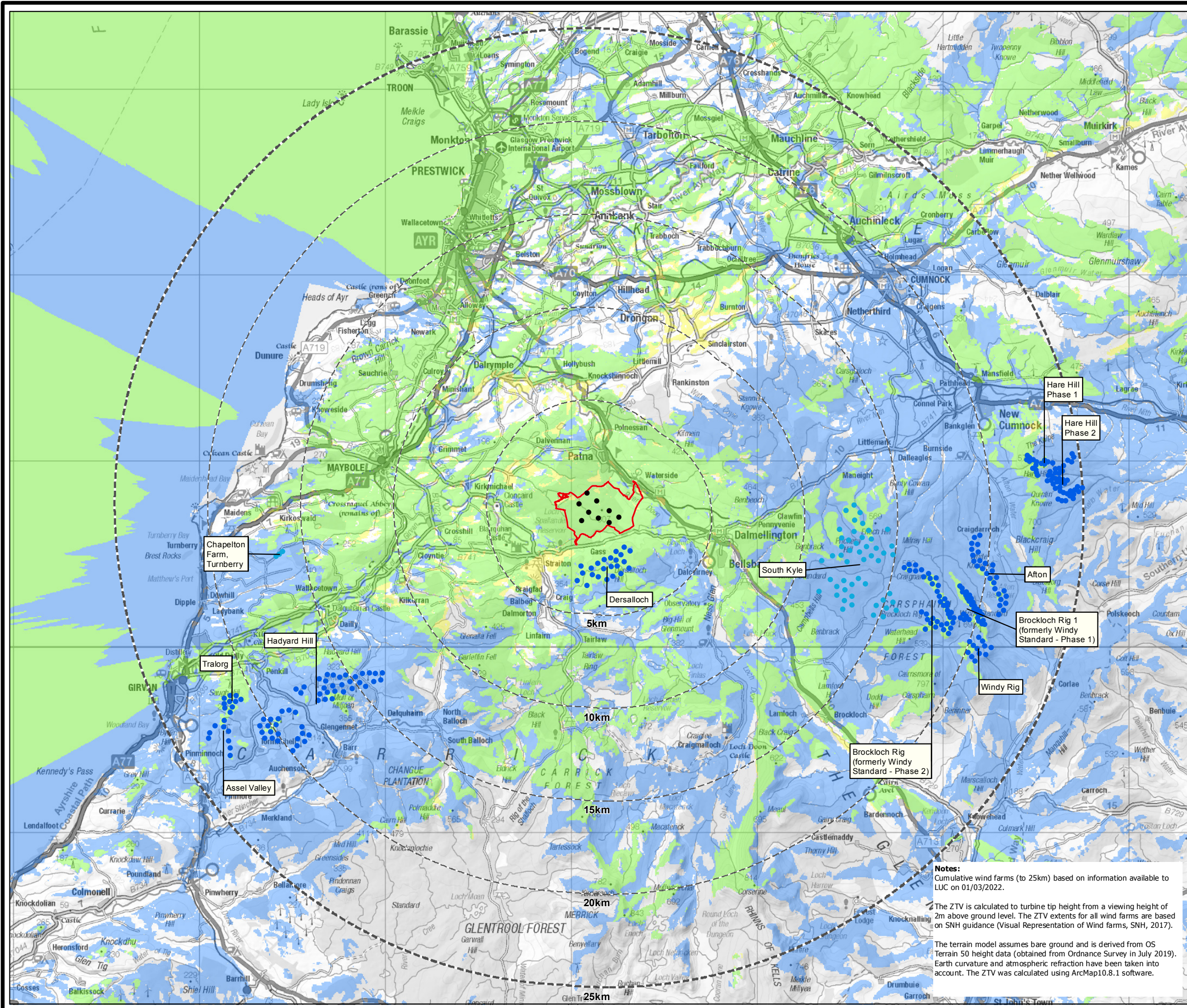


SCLENTEUCH WIND FARM

FIGURE 5.1.9a

CUMULATIVE ZONE OF THEORETICAL VISIBILITY - OPERATIONAL WIND FARMS AND SCLENTEUCH (25 KM)

CONTAINS ORDNANCE SURVEY DATA © CROWN COPYRIGHT AND DATABASE RIGHT 2022



- Turbine
- ▭ Proposed Development Area
- 5km intervals from outer turbines
- 25km study area

Wind farm developments (by status)

- Operational
- Under Construction

Cumulative ZTV

- ▭ Only operational and under construction wind farms visible
- ▭ Only Scienteuch Wind Farm visible
- ▭ Scienteuch, operational and under construction wind farms visible

Data source: RES

LAYOUT DWG: 03896-RES-LAY-DR-TE-001

LAYOUT NO.: PSC0sc1026

DRAWING NUMBER

FIG51_09a_11507_RES_LVIA_CZTV_Opp_Construction_25km_A3L

SCALE - 1:200,000 @ A3

ENVIRONMENTAL STATEMENT & PLANNING APPLICATION 2022

THIS DRAWING IS THE PROPERTY OF RENEWABLE ENERGY SYSTEMS LTD. AND NO REPRODUCTION MAY BE MADE IN WHOLE OR IN PART WITHOUT PERMISSION

Notes:
Cumulative wind farms (to 25km) based on information available to LUC on 01/03/2022.

The ZTV is calculated to turbine tip height from a viewing height of 2m above ground level. The ZTV extents for all wind farms are based on SNH guidance (Visual Representation of Wind farms, SNH, 2017).

The terrain model assumes bare ground and is derived from OS Terrain 50 height data (obtained from Ordnance Survey in July 2019). Earth curvature and atmospheric refraction have been taken into account. The ZTV was calculated using ArcMap10.8.1 software.

