

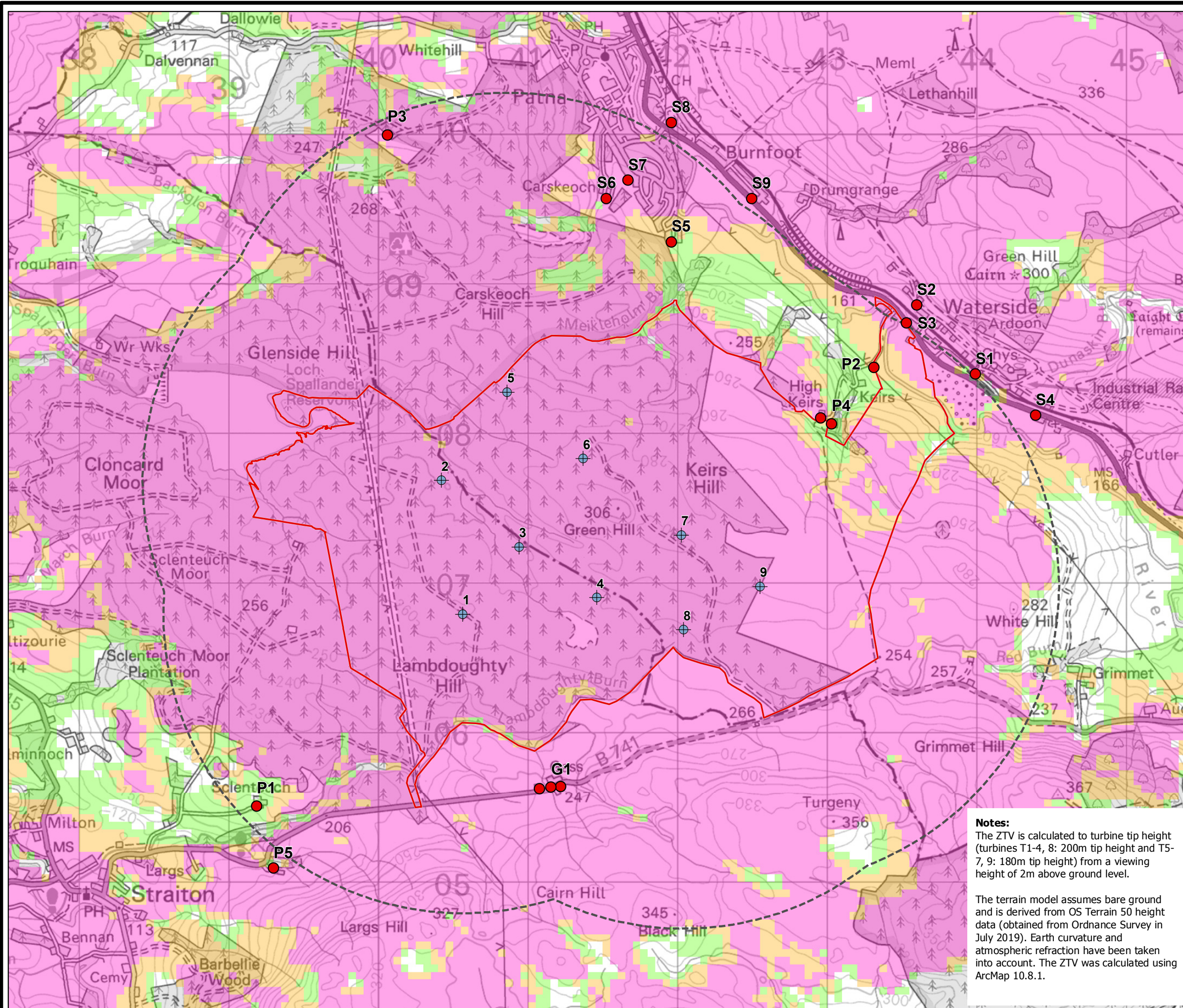


SCLENTEUCH WIND FARM

FIGURE A5.4.1

RESIDENTIAL VISUAL AMENITY ASSESSMENT STUDY AREA WITH BLADE TIP HEIGHT (180M AND 200M) ZONE OF THEORETICAL VISIBILITY (ZTV)

© CROWN COPYRIGHT AND DATABASE RIGHTS 2022 ORDNANCE SURVEY 0100031673



- Turbine
 - Proposed Development Area
 - 2km from outer turbines
- Potential Turbine Visibility (Tip Height)**
- 1 - 3 turbines visible
 - 4 - 6 turbines visible
 - 7 - 9 turbines visible

RVAA - Individual Properties within 2km

- Individual Properties
- G1 - Gass
- P1 - Scienteuch Farm
- P2 - Low Keirs
- P3 - Carclout
- P4 - High Keirs Cottage
- P5 - Glenash
- S1 - Waterside, Doon Valley Railway (LVIA VP2)
- S2 - Waterside, north end (LVIA VP3)
- S3 - New Cottages
- S4 - Chapel Row
- S5 - Keirs Crescent
- S6 - Carskeoch
- S7 - Clements Wynd
- S8 - A713 (LVIA VP4)
- S9 - Burnfoot

Notes:
 The ZTV is calculated to turbine tip height (turbines T1-4, 8: 200m tip height and T5-7, 9: 180m tip height) from a viewing height of 2m above ground level.

The terrain model assumes bare ground and is derived from OS Terrain 50 height data (obtained from Ordnance Survey in July 2019). Earth curvature and atmospheric refraction have been taken into account. The ZTV was calculated using ArcMap 10.8.1.

Data source: RES, LUC

LAYOUT DWG 03896-RES-LAY-DR-TE-001	LAYOUT NO. PSC0sc1026
---------------------------------------	--------------------------

DRAWING NUMBER
FIGA51_4-1_11507_RES_LVIA_RVAA_ZTV_OST50_TIP200_180m_PSC0sc1026_VP_45km_A3

SCALE - 1:25,000 @ A3

ENVIRONMENTAL STATEMENT & PLANNING APPLICATION 2022

THIS DRAWING IS THE PROPERTY OF RENEWABLE ENERGY SYSTEMS LTD. AND NO REPRODUCTION MAY BE MADE IN WHOLE OR IN PART WITHOUT PERMISSION