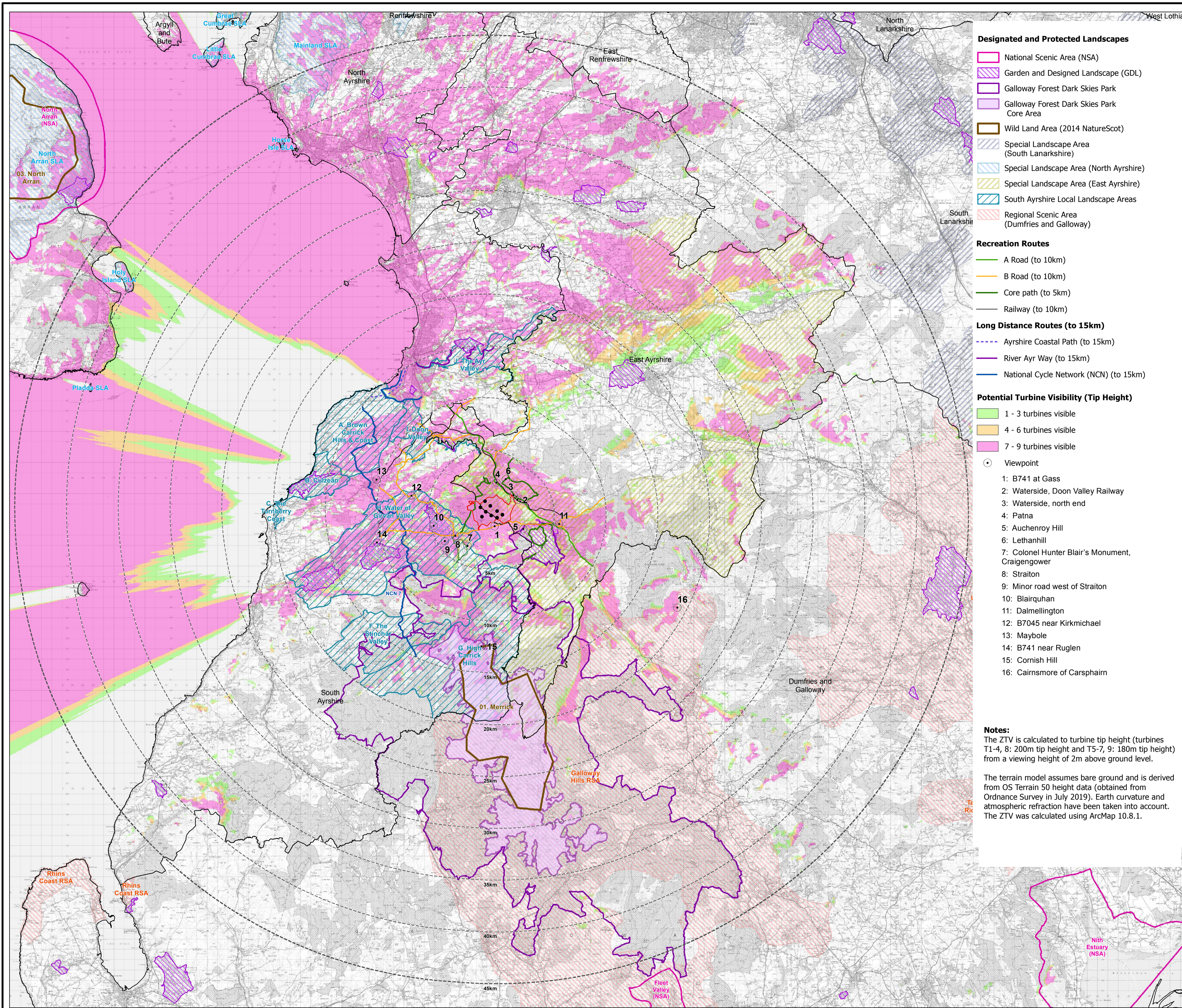




SCLENTEUCH WIND FARM

FIGURE 5.1.2b BLADE TIP HEIGHT (180M AND 200M) ZONE OF THEORETICAL VISIBILITY (ZTV) AND VIEWPOINT LOCATIONS

© CROWN COPYRIGHT AND DATABASE RIGHT 2022 Ordnance Survey 0100031673



Designated and Protected Landscapes

- National Scenic Area (NSA)
- Garden and Designed Landscape (GDL)
- Galloway Forest Dark Skies Park
- Galloway Forest Dark Skies Park Core Area
- Wild Land Area (2014 NatureScot)
- Special Landscape Area (South Lanarkshire)
- Special Landscape Area (North Ayrshire)
- Special Landscape Area (East Ayrshire)
- South Ayrshire Local Landscape Areas
- Regional Scenic Area (Dumfries and Galloway)

Recreation Routes

- A Road (to 10km)
- B Road (to 10km)
- Core path (to 5km)
- Railway (to 10km)

Long Distance Routes (to 15km)

- Ayrshire Coastal Path (to 15km)
- River Ayr Way (to 15km)
- National Cycle Network (NCN) (to 15km)

Potential Turbine Visibility (Tip Height)

- 1 - 3 turbines visible
- 4 - 6 turbines visible
- 7 - 9 turbines visible

Viewpoint

- 1: B741 at Gass
- 2: Waterside, Doon Valley Railway
- 3: Waterside, north end
- 4: Patna
- 5: Auchenny Hill
- 6: Lethanhill
- 7: Colonel Hunter Blair's Monument, Craiggowder
- 8: Straiton
- 9: Minor road west of Straiton
- 10: Blairquhan
- 11: Dalmellington
- 12: B7045 near Kirkmichael
- 13: Maybole
- 14: B741 near Ruglen
- 15: Cornish Hill
- 16: Cairnmore of Carsphairn

Notes:
The ZTV is calculated to turbine tip height (turbines T1-4, 8: 200m tip height and T5-7, 9: 180m tip height) from a viewing height of 2m above ground level.

The terrain model assumes bare ground and is derived from OS Terrain 50 height data (obtained from Ordnance Survey in July 2019). Earth curvature and atmospheric refraction have been taken into account. The ZTV was calculated using ArcMap 10.8.1.

- Turbine
- Proposed Development Area
- 5km intervals from outer turbines
- 45km study area
- Local Authority boundary



Data source: RES, LUC, NatureScot, SUSTRANS, LDWA

LAYOUT DWG: 03896-RES-LAY-DR-TE-001

T-LAYOUT NO.: PSC0sci026

DRAWING NUMBER: FIG51_02b_11507_RES_LVIA_ZTV_05T50_TIP200_180m_PSC0sci026_VP_45km_A11

SCALE - 1:180,000 @ A1

ENVIRONMENTAL STATEMENT & PLANNING APPLICATION 2022

THIS DRAWING IS THE PROPERTY OF RENEWABLE ENERGY SYSTEMS LTD. AND NO REPRODUCTION MAY BE MADE IN WHOLE OR IN PART WITHOUT PERMISSION