



SCLENTEUCH WIND FARM LVIA CONSULTATION

FIGURE 3a

TIP HEIGHT (200M) ZONE OF THEORETICAL VISIBILITY (ZTV) AND VIEWPOINT LOCATIONS

CONTAINS ORDNANCE SURVEY DATA © CROWN
COPYRIGHT AND DATABASE RIGHT 2022

- Turbine
- ▭ Site boundary
- 5km intervals from outer turbines
- 45km study area
- Potential Turbine Visibility (Tip 200m)**
- 1 - 3 turbines visible
- 4 - 6 turbines visible
- 7 - 9 turbines visible
- Viewpoint
- Recreation Routes**
- A Road (to 45km)
- Core path (to 5km)
- Long Distance Routes (to 45km)
- Annandale Way
- Ayrshire Coastal Path
- Clyde Walkway
- Cross Borders Drove Road
- Mull of Galloway Trail
- Romans and Reivers Route
- Southern Upland Way
- River Ayr Way
- National Cycle Network (NCN) (to 45km)

Data source: RES, LUC, NatureScot, SUSTRANS, LDWA

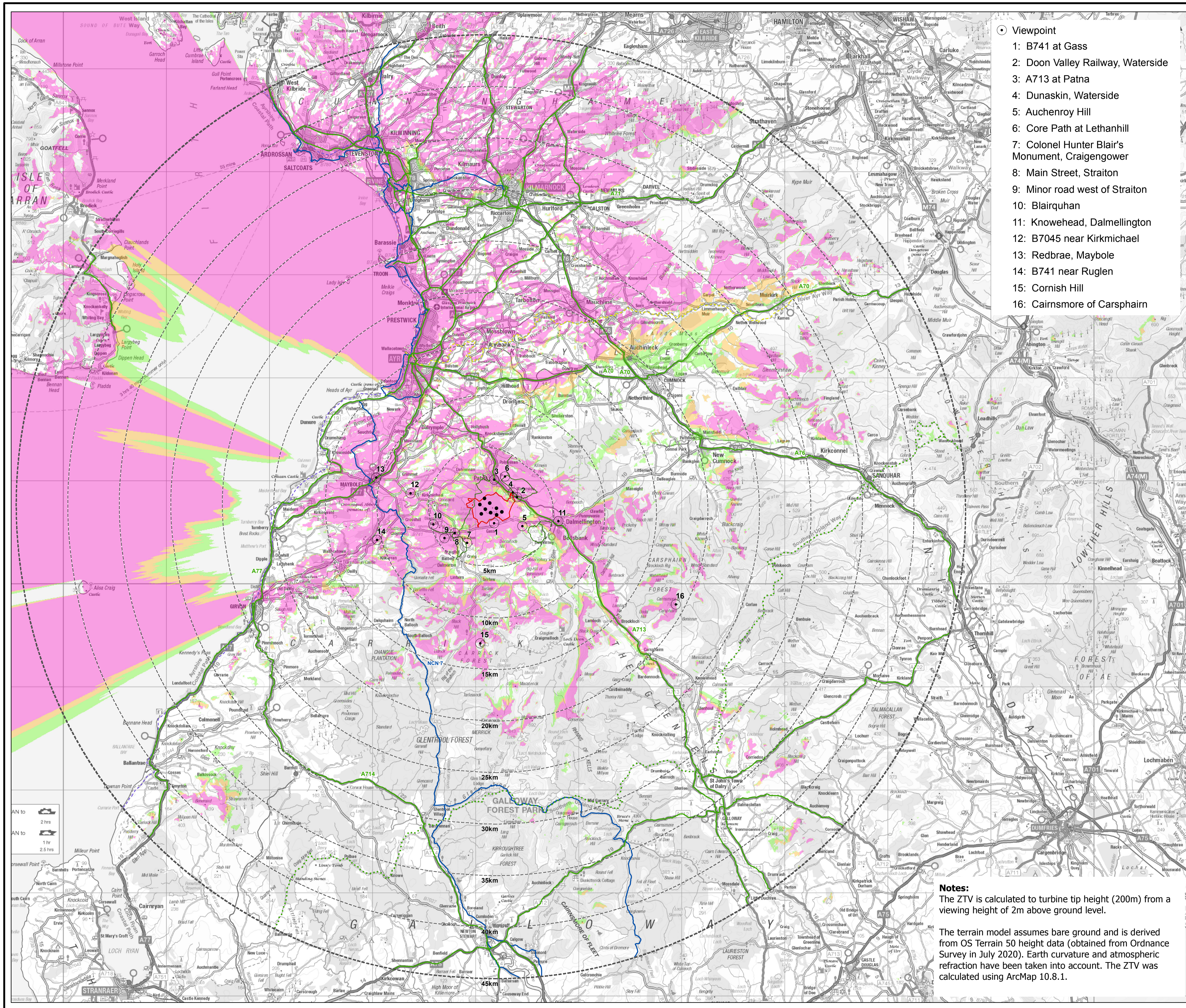
LAYOUT DWG 03896-RES-LAY-DR-TE-001	T-LAYOUT NO. PSC0sci026
--	-----------------------------------

DRAWING NUMBER
FIG03_0a_11507_RES_LVIA_ZTV_0ST50_TIP200_PSC0sci026_VP_45km_A11

SCALE - 1:180,000 @ A1

SCLENTEUCH WIND FARM LVIA 2022

THIS DRAWING IS THE PROPERTY OF RENEWABLE ENERGY
SYSTEMS LTD. AND NO REPRODUCTION MAY BE MADE IN
WHOLE OR IN PART WITHOUT PERMISSION



- Viewpoint
- 1: B741 at Gass
 - 2: Doon Valley Railway, Waterside
 - 3: A713 at Patna
 - 4: Dunaskin, Waterside
 - 5: Auchenroy Hill
 - 6: Core Path at Lethanhill
 - 7: Colonel Hunter Blair's Monument, Craigenhower
 - 8: Main Street, Straiton
 - 9: Minor road west of Straiton
 - 10: Blairquhan
 - 11: Knowehead, Dalmellington
 - 12: B7045 near Kirkmichael
 - 13: Redbrae, Maybole
 - 14: B741 near Ruglen
 - 15: Cornish Hill
 - 16: Cairnsmore of Carsphairn

Notes:
The ZTV is calculated to turbine tip height (200m) from a viewing height of 2m above ground level.

The terrain model assumes bare ground and is derived from OS Terrain 50 height data (obtained from Ordnance Survey in July 2020). Earth curvature and atmospheric refraction have been taken into account. The ZTV was calculated using ArcMap 10.8.1.